

Butte County Department of Development Services

TIM SNELLINGS, DIRECTOR | PETE CALARCO, ASSISTANT DIRECTOR



7 County Center Drive
Oroville, CA 95965
(530) 538-7601 Telephone
(530) 538-7785 Facsimile
www.buttecounty.net/dds
www.buttegeneralplan.net

ADMINISTRATION * BUILDING * PLANNING

TO: State, Federal, and Local Agencies and Interested Parties

FROM: Dan Breedon, Principal Planner, Butte County Department of Development Services

SUBJECT: NOTICE OF PREPARATION (NOP) Supplementary Programmatic Environmental Impact Report (EIR) for a General Plan Amendment to Butte County General Plan 2030 and a Comprehensive Update to the Butte County Zoning Ordinance

DATE: March 1, 2012

Attached find the Notice of Preparation (NOP) for a Supplementary Programmatic Environmental Impact Report (EIR) for a General Plan Amendment to Butte County General Plan 2030 and a Comprehensive Update to the Butte County Zoning Ordinance

In accordance with the California Environmental Quality Act (CEQA) Guidelines Section 15082, Butte County requests that you provide any applicable comments concerning this NOP. The **review period** for this document is from March 1, 2012 through March 30, 2012.

A **public scoping meeting** is scheduled for Thursday, March 15, 2012, at 25 County Center Drive, Oroville, CA from 1:00 – 4:00 pm. Representatives from all State, Federal and Local Agencies and other interested parties are invited to attend the scoping meeting to become familiar with this project prior to providing comments. All inquiries and comments may be directed to the following person:

Dan Breedon, Principal Planner
Butte County Department of Development Services
7 County Center Drive
Oroville, CA 95965
Phone: 530-538-7629
Email: dbreedon@buttecounty.net

Notice of Preparation

Date: March 1, 2012

To: Responsible Agencies and
Other Interested Parties

State Clearinghouse
P.O. Box 3044
Sacramento, CA 95812-3044

From: Butte County
Department of Development Services
7 County Center Drive
Oroville, CA 95965

Butte County will be the Lead Agency and will prepare a Supplemental Environmental Impact Report (EIR) for a General Plan Amendment to Butte County General Plan 2030 and a Zoning Ordinance Update. Additional information on this project including the proposed General Plan Amendment and Draft Zoning Ordinance is available at www.buttegeneralplan.net. The project description, location, and the potential environmental effects are described below. The public is invited to provide comments in writing on issues to be addressed in the Draft Supplemental EIR. Public agencies with views on the scope of the Draft Supplemental EIR as per the project description, or issues that are germane to your agency's statutory responsibilities in connection with the proposed project, are invited to provide comments.

Due to the time limits mandated by State law, your response must be sent at the earliest possible date, but no later than March 30, 2012, 30 days from the publication date of this NOP.

Please send your response to Dan Breedon, Principal Planner, at the address shown above. Please include a contact person for your agency.

1. Project Name: General Plan Amendment and Zoning Ordinance Update

2. Project Location:

The project location is shown in Figure 1. Butte County is located in north central California at the northern end of the Sacramento Valley, approximately 150 miles northeast of San Francisco and 70 miles north of Sacramento. The unincorporated area that is subject to the General Plan Amendment and Zoning Ordinance Update is approximately 1,610 square miles. Highways 70 and 99, which extend in a north-south direction through the county, define the principal transportation corridors connecting the county to the region. Highway 32 and 162 provide sub-regional connections to areas to the west of

the county and to Interstate 5. Figure 2 displays the planning area for the General Plan Amendment and Zoning Ordinance Update.

3. Lead Agency Contact:

Dan Breedon, Principal Planner
Butte County Department of Development Services
7 County Center Drive
Oroville, CA 95965
(530) 538-7629
dbreedon@buttecounty.net

4. Project Sponsor:

Butte County
7 County Center Drive
Oroville, CA 95965

5. Project Description:

Butte County is amending Butte County General Plan 2030 (adopted in October 2010) primarily to reflect corrections and changes to the General Plan Land Use Map, as well as associated text, tables, and figures. The amendment includes land use designation changes that were identified through the Zoning Ordinance Update process, which occurred after adoption of the General Plan, including changes to better reflect existing uses and respond to landowner concerns; changing the Agriculture designation to Rural Residential in several unincorporated areas around the City of Biggs and community of Palermo to more accurately reflect existing parcelization; and the addition of two new overlays to address public housing and military airspace. Various other text and map amendments are also included in the General Plan Amendment, including text and map amendments to coordinate with military operations and other minor amendments to correct errors and clarify intent. In addition, Butte County is preparing a comprehensive update to the Zoning Ordinance, including text and map changes, which establishes development and land use regulations intended to implement the General Plan's land use map and policies, and makes the County Zoning Map consistent with the General Plan.

The County intends to prepare a Supplemental EIR to provide an assessment of the General Plan Amendment and Zoning Ordinance Update, which are expected to be completed in fall 2012. The Supplemental EIR will address the following environmental issues: Aesthetics, Agriculture, Biological Resources, Geology, Soils and Mineral Resources, Hazards and Safety, Hydrology and Water Quality, Land Use, Noise, Population and Housing, Public Services and Recreation, Transportation and Circulation, Utilities, and Greenhouse Gas Emissions. In the 2010 General Plan 2030 Programmatic EIR, it was found that General Plan 2030 goals, policies, and actions would avoid significant impacts related to Air Quality and Cultural Resources. The County anticipates that the outcomes of these topics would not change with the proposed project, and will therefore not be reevaluated in the Supplemental EIR.

6. Public Scoping Meeting

The County will have a Scoping Meeting to: 1) inform the public and interested agencies about the proposed project; and 2) solicit public comment on the scope of the environmental issues to be addressed in the Supplemental EIR.

Date/Time: Thursday, March 15, 2012
1:00 pm

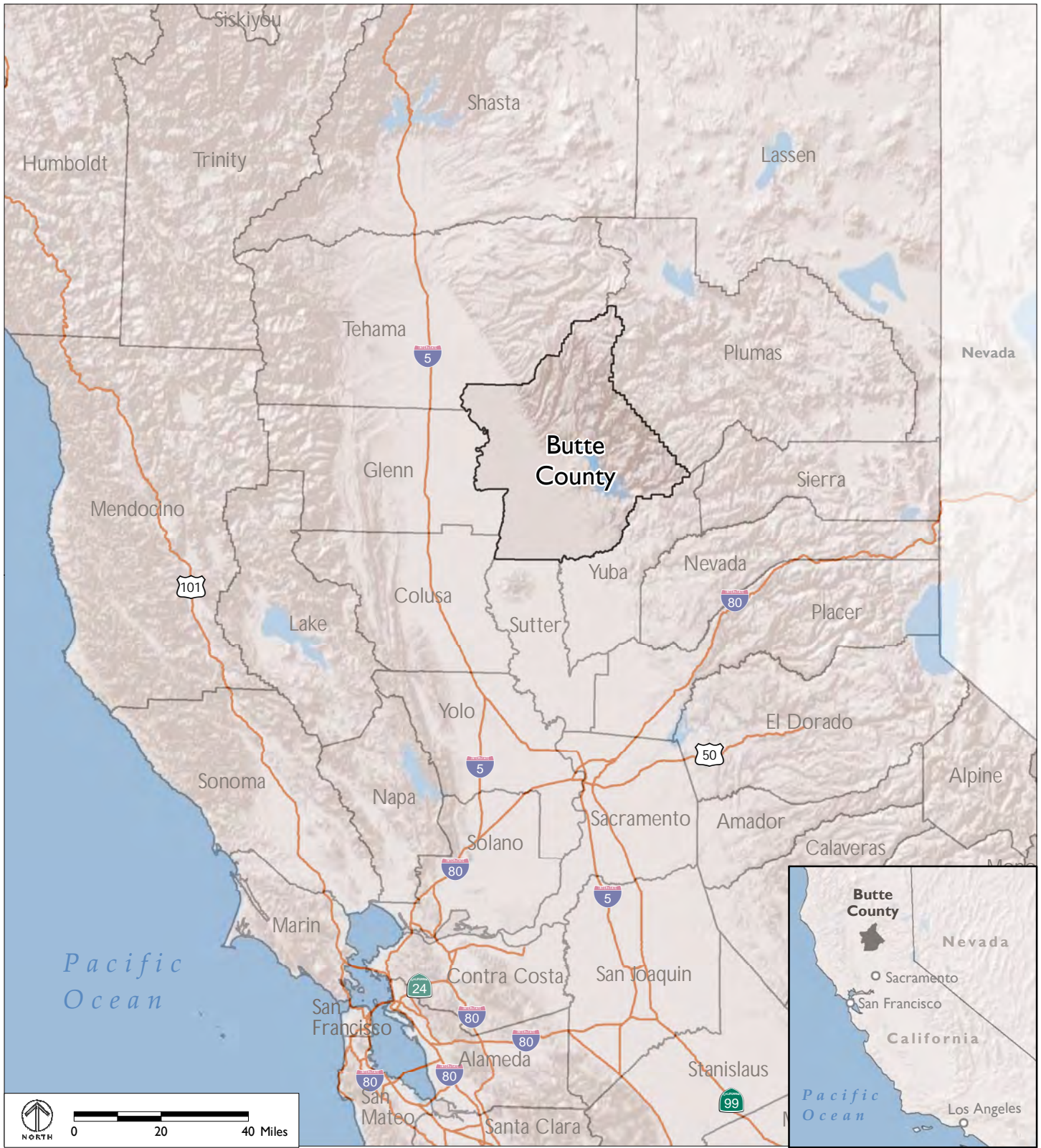
Location: Butte County Administration Building
25 County Center Drive
Oroville, CA 95965

Date 2/28/12

Signature 

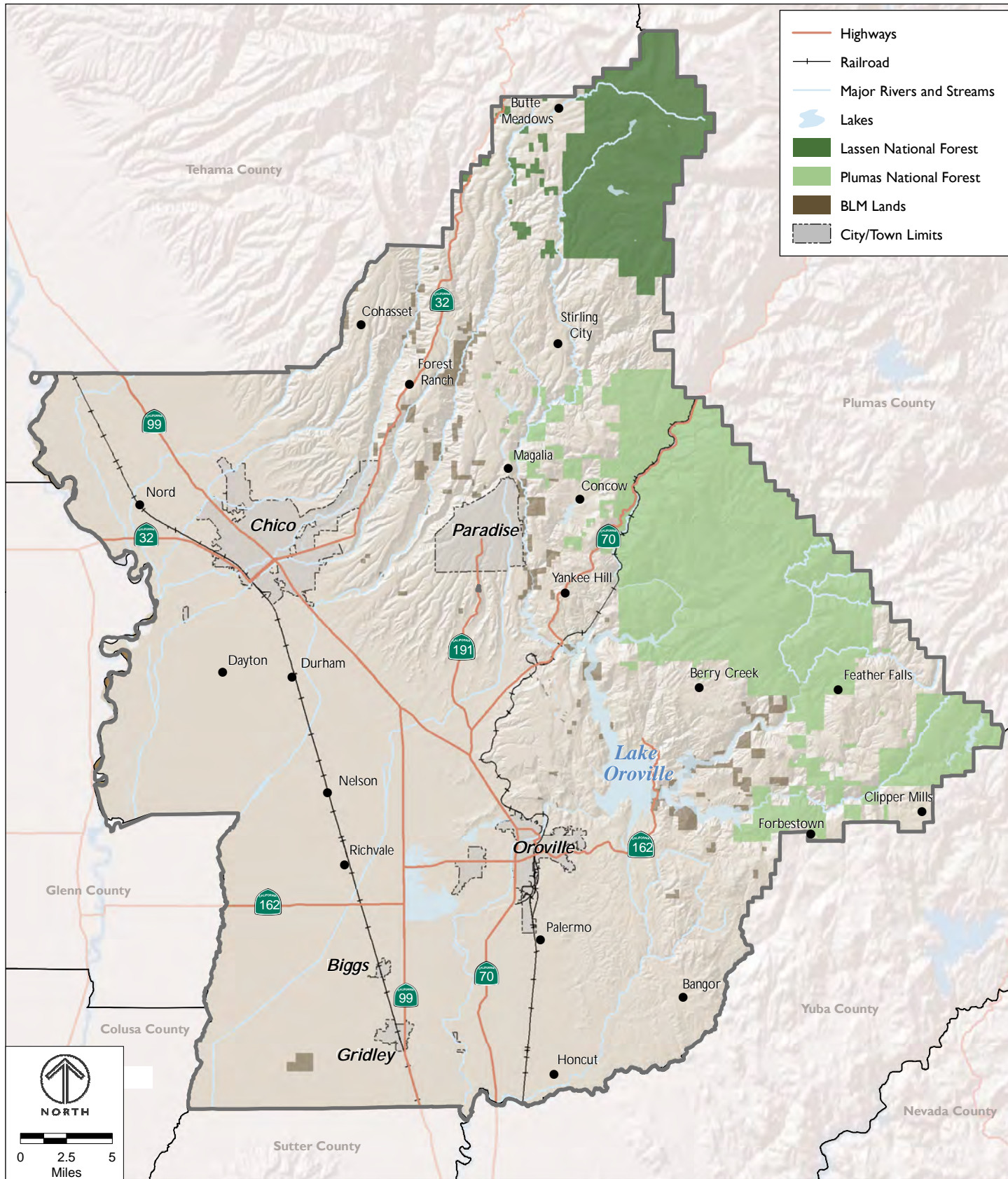
Title PRINCIPAL PLANNER

BUTTE COUNTY
GENERAL PLAN AMENDMENT AND ZONING ORDINANCE UPDATE
NOTICE OF PREPARATION



Source: The Planning Center | DC&E, 2012; ESRI 2010; FHA 2002.

FIGURE I
REGIONAL LOCATION



Sources: Butte County Geographic Information Systems; BLM; US Forest Service; ESRI 2010; FHA 2002

FIGURE 2
PLANNING AREA